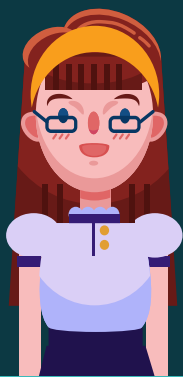


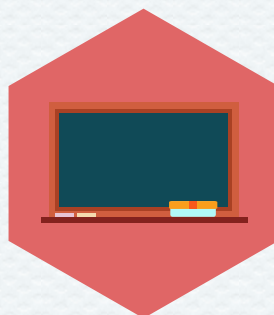
Leveraging Existing Resources in Out-of-School Time Programs



When assessing your program, look at what resources and strengths already exist in your community. This can look like people, places, and things.

Supplies & Equipment

What supplies, equipment and technologies do you have access to?



Space

What indoor and outdoor space is available to you? How can you safely maximize the space?



Staff Talents

What talents, passions and expertise do your staff have? How can you best use these?



Connections

What connections do you have? Staff and parents? Let people know you are always looking to expand resources.

Partnerships

What partnerships already exist that you can expand on? What organizations and business exist in your community that are potential partnerships?



Virginia Out-of-School Time
Resource Exchange

